





CITADEL

COMMERCIAL COMPLEX

TABLE OF CONTENTS

CITADEL

STRATEGIC LOCATION

SPECTACULAR DESIGN

COMMERCIAL MIX

FEATURES AND AMENITIES

ABOUT THE DEVELOPER



CITADEL
COMMERCIAL COMPLEX

CITADEL
COMMERCIAL COMPLEX



WHERE ALL UNDER ONE ROOF

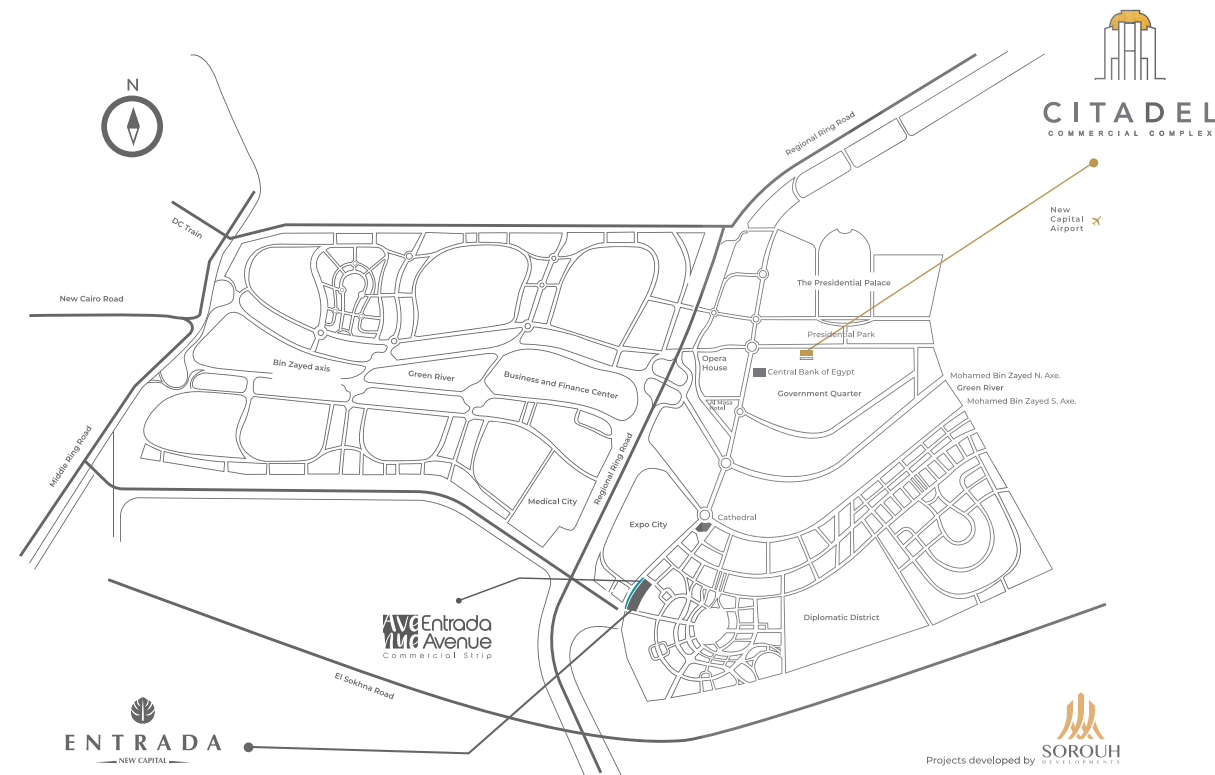
Designed to be a singular landmark in the heart of the New Administrative Capital, Citadel is the ultimate destination for aspiring businessmen. A commercial project with its unique mixture of business and leisure services catering to different needs, introducing a new lifestyle that combines work and pleasure together under one roof.

Think of Citadel as an urban convenience center that focuses on daily necessities, services and a generous dining offering. Situated on the ground and first floors, a diverse set of restaurants and cafes present local and international cuisines and delicacies offering Citadel's visitors the pleasure of a delicious meal or drink during a shopping spree.



STRATEGIC LOCATION

Characterized by its central location in Government District and Financial District, in the heart of the New Capital, Citadel overlooks the Presidential Park facing the Presidential Palace.



CITADEL
COMMERCIAL COMPLEX

WHERE ALL ROADS LEAD

It offers easy accessibility from several points, including the Regional Ring Road, connecting you to Suez Road, Sokhna Road, and Ismailia Road, in addition to direct access to New Cairo through North 90th Road.



WHERE PEOPLE LIVE TO WORK

Indoor work environments in particular light, noise and temperature have an impact on employee productivity. At Sorouh we understand this, our architectural master plan is based on the idea that attractive offices, with common areas and leisure activities, will appeal to professional businessmen. If a positive office interior helps, it makes sense that a nice outdoor environment should boost morale too.

Stretched over 6 floors, Citadel's administrative section offers ambitious businessmen quiet spacious areas to carry out their work, smart offices, elegant meeting rooms and sophisticated business lounges where you can conduct your day-to-day business.

All these benefits are incorporated to meet your daily business needs.



CITADEL

COMMERCIAL COMPLEX



CITADEL
COMMERCIAL COMPLEX

WHERE OLD WORLD CHARM MEETS MODERN ELEGANCE

At Sorouh, we believe that great design inspires people to spend longer time in shopping centers. In Citadel, the design and architecture are placed at the heart of the experience within a first-class setting. The center is designed as a long-term asset of sustainable value, with enduring appeal and strong resilience. Visitors of Citadel will be able to experience some of the history and charm of the Art Deco architecture that captivated the world.

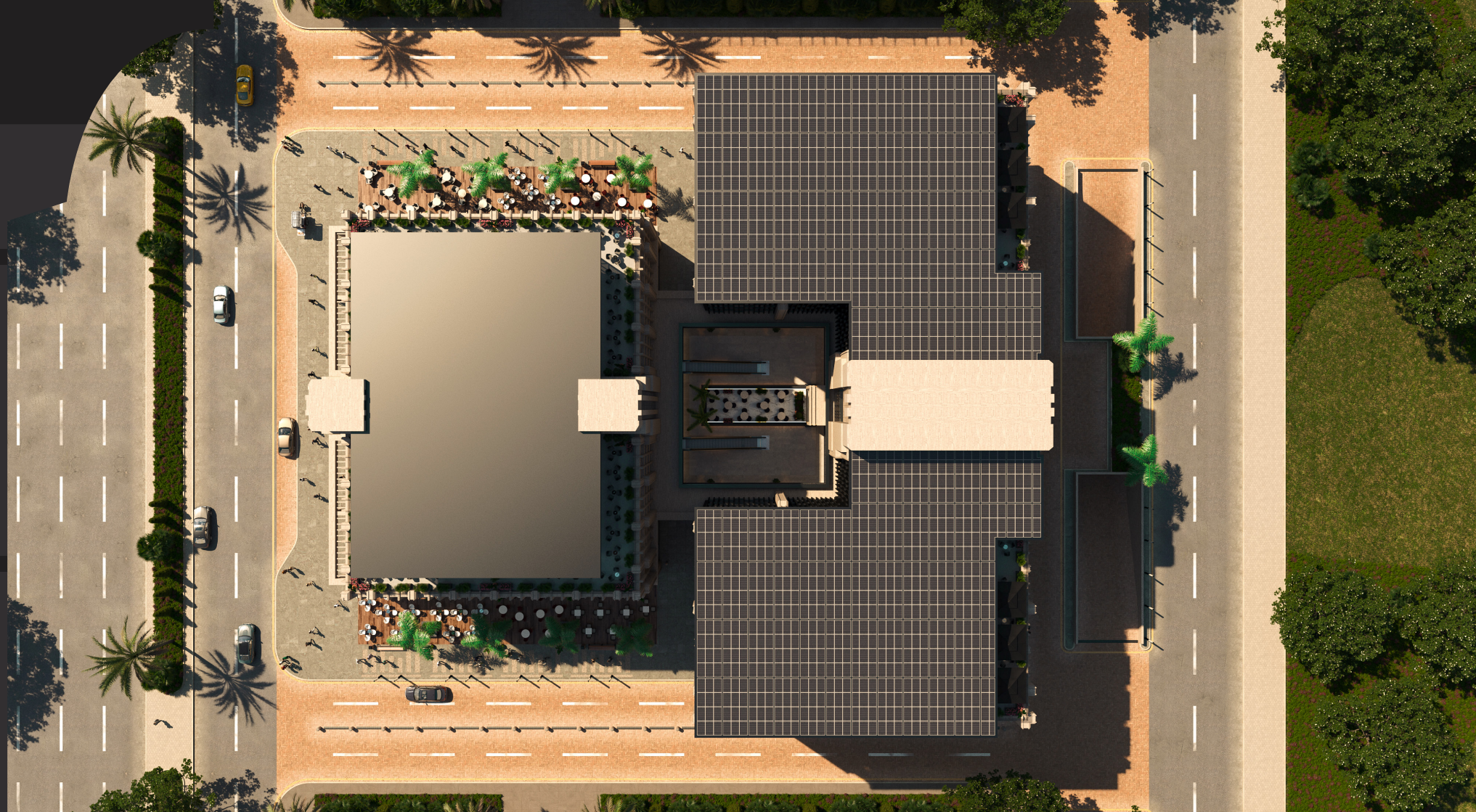
A revolutionary concept, envisioned by award winning architect Raef Fahmy, Citadel embodies both old-world romance and modern sophistication inspired by the elegant. Early 20th century Art Deco architecture that dominated Europe's cities mixed with modern expressions.

Nothing articulates this concept more than the Plaza. Centrally placed between the twin buildings, the Atrium is a double height open space that emanates a warm ambience creating a stunningly beautiful and welcoming open space for people to relax.

CITADEL
COMMERCIAL COMPLEX

WHERE REAL GREEN DOMINATES CONCRETE

In a city dominated by air-conditioned complexes, Citadel is designed to represent a new breed of open-air mall with the purpose of creating community areas and open green spaces featuring tree-ringed courtyards that works creatively around Cairo's climate to give visitors some breathing space amid the concrete.



WHERE PEOPLE COME TO MEET



The Citadel is located at the heart of the New Administrative Capital, which is set to house over 5 million people. Citadel is well optimized to suit its catchment area and its role as a city district shopping center. Developed as a natural part of the New Administrative Capital's city center, Citadel will serve as the number one meeting place for people working and living in the neighborhood.

Today, successful commercial centers need to be more than shopping. An increasing number of customers combine shopping with restaurant visits, gym training and other activities. Therefore, Citadel was developed as an urban meeting place, in addition to shopping, also it offers other services, culture and the opportunity to dine in a pleasant environment.



CITADEL

COMMERCIAL COMPLEX

WHERE CONVENIENCE-LED TO MORE THAN SHOPPING

With the unmatched sunny weather, wide open space, Citadel offers its visitors a unique shopping experience

through its wide array of deluxe retail stores that bring luxurious brands from all over the world right to their customers' hands. The large area dedicated to offices and several amenities and services adds to the attractiveness of the project and ensures a high footfall.

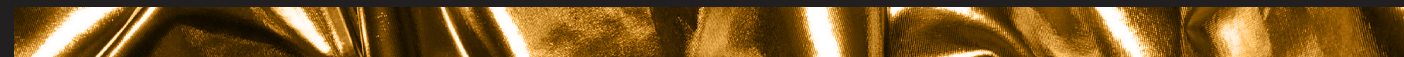


CITADEL
COMMERCIAL COMPLEX

WHERE AN EXCLUSIVE BUSINESS CLUB AT YOUR SERVICE

The Citadel houses an exclusive business club, where you can work and complete your business deals over a mouth-watering meal and enjoy the open air and marvelous view of the New Capital skyline.

WHERE CONVENIENCE IS THE STANDARD



- Parking
- Customizable Offices
- Health
- Security
- Central Air conditioning
- Building Management System





CITADEL
COMMERCIAL COMPLEX

Parking:

Employees and customers will have no problem parking their vehicles in the two dedicated floors of the garage set to accommodate up to 300 Cars.

Customizable Offices:

Modern and spacious with flexible space solutions.

Health:

Pollution and noise levels will be lower than in the city centers conducive to relaxing day.



Security:

CCTV Security camera and guards patrolling will ensure a safe environment for business and visitors alike.



Central Air conditioning:

- Chilled water system via district cooling.
- Firefighting Sprinkler System.
- Emergency Electrical System.

Building Management System:

- BMS to control A/C and electrical systems.
- Access Control System.
- Fire Alarm System.
- Triple Play System: (Voice, Data and TV).





Disclaimer

1. All dimensions are subject to modification up to 5% construction tolerance.
2. The master plan reserves the right to make changes as deemed necessary during construction.
3. Actual unit areas are subject to change as necessary with no conflict with the accepted practice regarding measurement in item no. 1, also windows & material are subject to change as deemed necessary.
4. Ground floor garden areas may vary in terms of dimensions and outline according to the final placement within the final master plan design.
5. All placements and visuals are for demonstrative purposes and are subject to changes as necessary.

1. جميع المقاييس الخشبية خاضعة للتسوية الهندسية في التنفيذ لا حدود 5%.

2. المخطط الرئيسي يظل في محل صلاحيات هذه الهندسة المعمارية لا يجوز التعديل أو الترخيص.

3. المساحات الخشبية والمواد الخام خاضعة للتغيير أو الترخيص المعماري لا يجوز التعديل أو الترخيص مع التسوية الهندسية.

4. مساحات الحدائق الأرضية قد تتغير في الأبعاد والخطوط والمواد الخام خاضعة للتغيير مع عدم التعديل على المخطط.

5. جميع المخططات المعمارية عرضية الأبعاد فقط وهي عرضية التنفيذ لا يجوز التعديل.

Ground Floor



Disclaimer

1. All dimensions are subject to modification up to 5% construction tolerance.
2. The master plan reserves the right to make changes as deemed necessary during construction.
3. Actual unit areas are subject to change as necessary with no conflict with the accepted practice regarding measurement in item no. 1, also windows & material are subject to change as deemed necessary.
4. Ground floor garden areas may vary in terms of dimensions and outline according to the final placement within the final master plan design.
5. All placements and visuals are for demonstrative purposes and are subject to changes as necessary.

1. جميع المقاييس الخشبية خاضعة للتسوية الهندسية في التنفيذ لا حدود 5%.

2. المخطط الرئيسي يظل في محل صلاحيات هذه الهندسة المعمارية لا يجوز التعديل أو الترخيص.

3. المساحات الخشبية والمواد الخام خاضعة للتغيير أو الترخيص المعماري لا يجوز التعديل أو الترخيص مع التسوية الهندسية.

4. مساحات الحدائق الأرضية قد تتغير في الأبعاد والخطوط والمواد الخام خاضعة للتغيير مع عدم التعديل على المخطط.

5. جميع المخططات المعمارية عرضية الأبعاد فقط وهي عرضية التنفيذ لا يجوز التعديل.

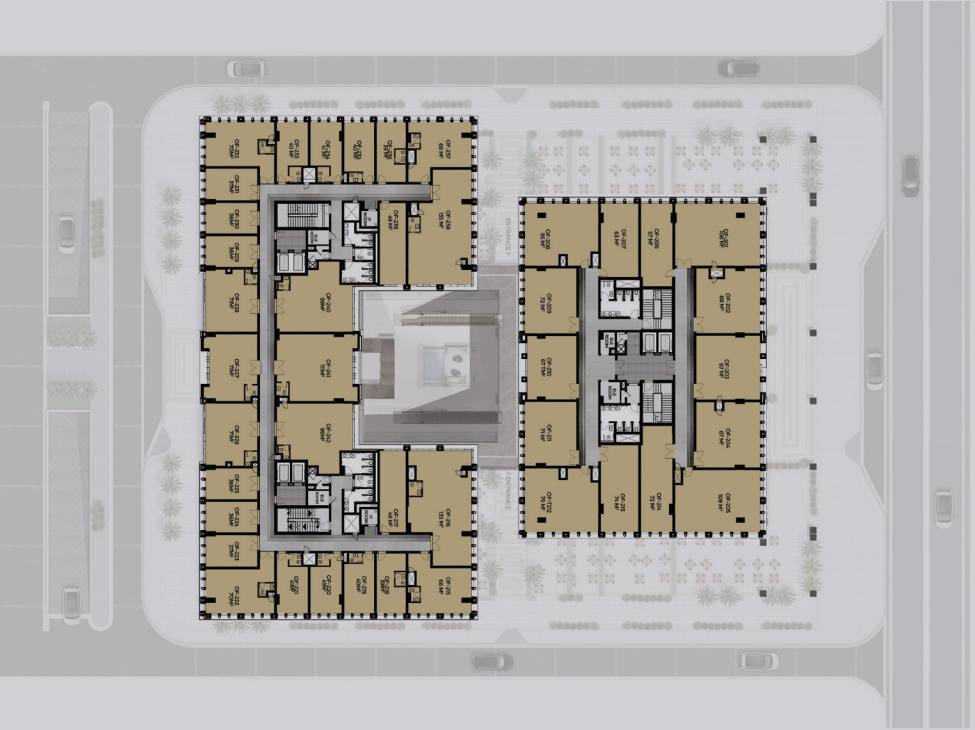


Disclaimer

1. All dimensions are subject to modification up to %5 construction tolerance.
2. The master plan reserves the right to make changes as deemed necessary during construction.
3. Actual unit areas are subject to change as necessary with no conflict with the accepted clearance percentage mentioned in item no. 1, also windows & material are subject to change as needed.
4. Ground floor garden areas may vary in terms of dimensions and outline according to the final placement within the final master plan design.
5. All measurements and visuals are for demonstrative purposes and are subject to changes as necessary.

1. جميع المقاييس الخشبية خاصة للمساحة المبنية في التأسيس لا تتعدى 5%.
2. المخطط الرئيسي يظل في ظل احتمالات عدم التأسيس الكامل أو لا تأسس.
3. المساحات الخشبية والوجهات المبنية للغير أو تأسس أو لا تأسس بما لا يتعارض مع النسبة المسموح بها في البناء.
4. مساحات البساتين والحدائق الخارجية والحدائق المائية خاصة للغير بما على المخطط العام للهيكل.
5. جميع المقاييس الخشبية والواجهات على الأرض.

Typical Floor Plan



Disclaimer

1. All dimensions are subject to modification up to %5 construction tolerance.
2. The master plan reserves the right to make changes as deemed necessary during construction.
3. Actual unit areas are subject to change as necessary with no conflict with the accepted clearance percentage mentioned in item no. 1, also windows & material are subject to change as needed.
4. Ground floor garden areas may vary in terms of dimensions and outline according to the final placement within the final master plan design.
5. All measurements and visuals are for demonstrative purposes and are subject to changes as necessary.

1. جميع المقاييس الخشبية خاصة للمساحة المبنية في التأسيس لا تتعدى 5%.
2. المخطط الرئيسي يظل في ظل احتمالات عدم التأسيس الكامل أو لا تأسس.
3. المساحات الخشبية والوجهات المبنية للغير أو تأسس أو لا تأسس بما لا يتعارض مع النسبة المسموح بها في البناء.
4. مساحات البساتين والحدائق الخارجية والحدائق المائية خاصة للغير بما على المخطط العام للهيكل.
5. جميع المقاييس الخشبية والواجهات على الأرض.



CITADEL
COMMERCIAL COMPLEX

ABOUT US:

Our Vision

To stand out as a revolutionary real estate developer with a diversified expertise, providing the market with state-of-the-art communities satisfying our thoughtful clients that will eventually last as generational legacies.

Our Mission

Work as a client centric real estate developer that offers innovative real estate concepts that are well studied, perfectly built and serviced to sustain both our client's trust and projects enduring.





CITADEL

COMMERCIAL COMPLEX

OUR PROJECTS

Over the past year, we set out to establish brand new projects with state-of-the-art architecture at the heart of the New Capital.

Our first development, Entrada, is a home to contemporary residential apartments and a commercial strip (Entrada Avenue) with a mixed-use area containing facilities, leisure and entertainment that is set to change the face of urban living.

Ensuring that everything is at your fingertips, Entrada commercial strip fuses practicality and convenience through Entrada Avenue. The Spanish architect created a landmark that stretches across four plazas on an area of 29,000 sqm to keep space and functionality in mind. It caters to everyday necessities, featuring an array of facilities with spacious parking spaces and drop off areas, our visitors can quickly access supermarkets, pharmacies, bakeries, banks and much more.

CONTACT US:

16101

Headquarters

Plot 45, Northern 90th Street, 5th Settlement, New Cairo
Cairo, Egypt.

Sales Office

Plot 65, Southern 90th Street, 5th Settlement, New Cairo
Cairo, Egypt

Email

Info@sorouhdevelopments.com

Website

www.sorouhdevelopments.com

Facebook

Sorouh Developments

Instagram

Sorouh Developments

LinkedIn

Sorouh Developments



CITADEL
COMMERCIAL COMPLEX

