

Ive
Mr



16101

Ave Entrada
Avenue
Commercial Strip



“WHERE EVERYTHING
IS AT YOUR
FINGERTIPS





TABLE OF CONTENT

01

PROJECT CONCEPT

03

DESIGN CONCEPT

05

LAYOUT/FLOORPLANS

02

STRATEGIC LOCATION

04

AMENITIES & FACILITIES

06

ABOUT THE DEVELOPER



PROJECT'S CONCEPT









PROJECT'S CONCEPT

A stunning strip mall designed by one of the most affluent Spanish architecture firms "L35".

It is spectacularly positioned on the frontage of Entrada project and surrounded by some of the best New Capital vibrant landmarks, where it is overlooking the Expo City, neighboring to one of the leading international universities campus and crossroads from the Medical City.

WHERE EVERYTHING IS AT YOUR FINGERTIPS

Stretching across 29,000 square meters, Entrada Avenue was perfectly designed to accommodate an equilibrium of buildings, landscape and walkways creating a flawless and harmonious balance.

Entrada commercial strip **"Entrada Avenue"** fuses practicality and convenience. Catering to everyday necessities, featuring an array of facilities with spacious parking spaces and drop off service areas, our visitors can quickly access supermarkets, groceries, a pharmacy, bakery, a bank and a laundry service and much more.

STRATEGIC
LOCATION



STRATEGIC LOCATION

HAPPINESS BEGINS WITH THE PERFECT LOCATION.

Entrada Avenue is located in the residential sector R7.
Only a **20-minute drive from New Cairo** with multiple access points through **Road 90, Suez and Sokhna roads**.

Avenue, an 800-meter-long strip mall facing the International Expo city, it is a five- minute drive along the axes of The Grand Mosque, Grand Cathedral, Al Masah hotel and The Presidential Palace.



DESIGN
CONCEPT





INSPIRED BY A SPANISH ARCHITECTURAL DESIGN

The **29,000** square meters of built up mixed- use commercial complex, stretching across four piazzas, keeping space and functionality in mind, offers a fantastic range of commercial spaces with a mix of state-of-the-art facilities, leisure and entertainment destinations needed for your emergent businesses, in line with international standards of design.

BUILDING FACADE AND DESIGN

The facade of each of the five building is 150m long It was designed to reflect a clear visual beauty that distinguishes it from any other commercial building.

The entire design also conveys a different Spanish atmosphere that sets it apart from all the competition.





A WALKABLE 30-METER-WIDE BOULEVARD

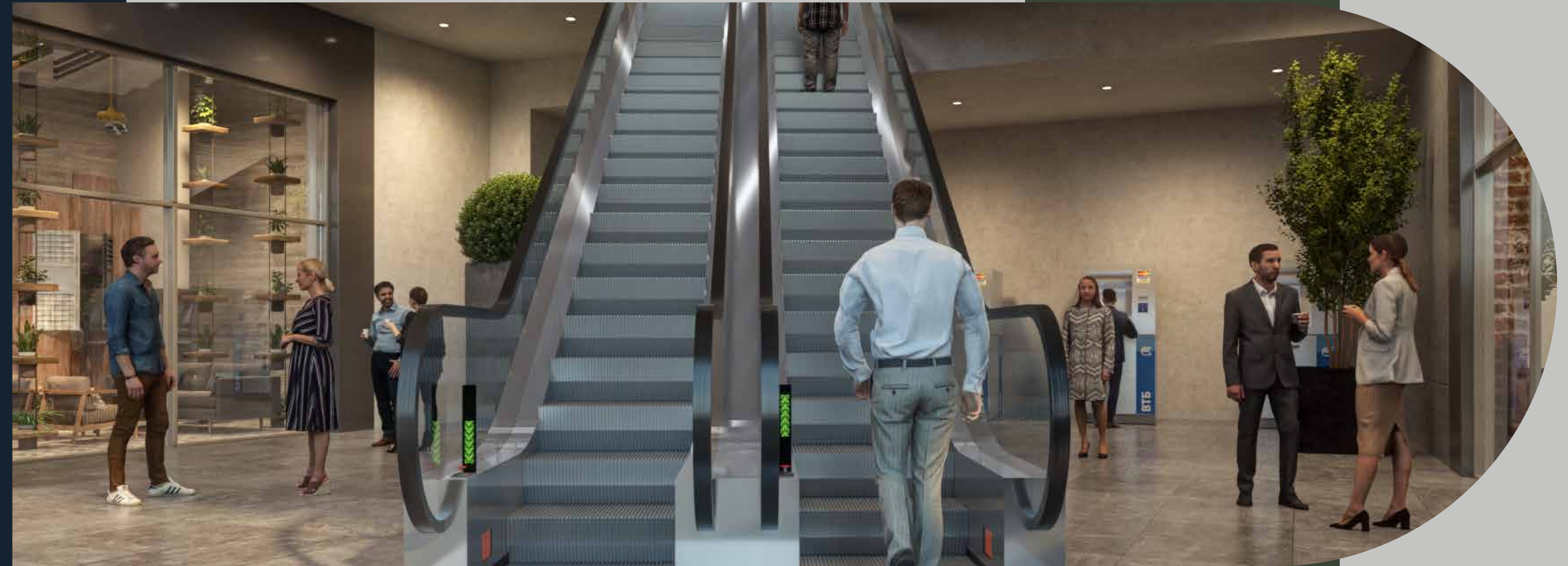
winds throughout greenery that are well segregated for absolute comfort and peace of mind within its own relaxation zone.

Our carefully designed piazzas cater to you with an enticing interplay of light and shade within its shaded patios and glistening water embracing landscaped walkways - a true creation of a spectacular landscape to suit your pursuits of relaxation and indulgence.

WHERE ALL YOUR NEEDS MEET

Entarada Avenue is the ultimate destination where you will find everything. An integrated project with its outstanding architecture and artistic landmark view, Entrada avenue is designed to introduce a new lifestyle combines pleasure and basic daily necessities together.

Our objective since the beginning of the project is for residents & visitors to find all means of comfort and enjoyment inside the mall so that their experience becomes unique and they want to repeat it. We find that the design of the mall provides all the services that customers may need



AMENITIES
&
FACILITIES





SHOPPING IS THE BEST THERAPY

Consisted of five buildings, Avenue has a varied set of restaurants and cafes that offers local and international cuisines that suits every taste.

Along the strip mall, a combination of deluxe retail stores that bring luxurious brands from all over the world to provide our Entrada's residents and visitors a full shopping experience adding to the beauty of Avenue and ensure a high stride.

THE FUTURE DEPENDS ON WHAT YOU DO TODAY

Good work needs good environment as it has impact on employee productivity.

Avenue provides quit spacious office that aspires businessmen to meet their daily business needs.





HEALTH IS A STATE OF BODY. WELLNESS IS A STATE OF BEING

Avenue aims to provide clinics that maintain comfort and health to patients who acquire health solutions, services and care.

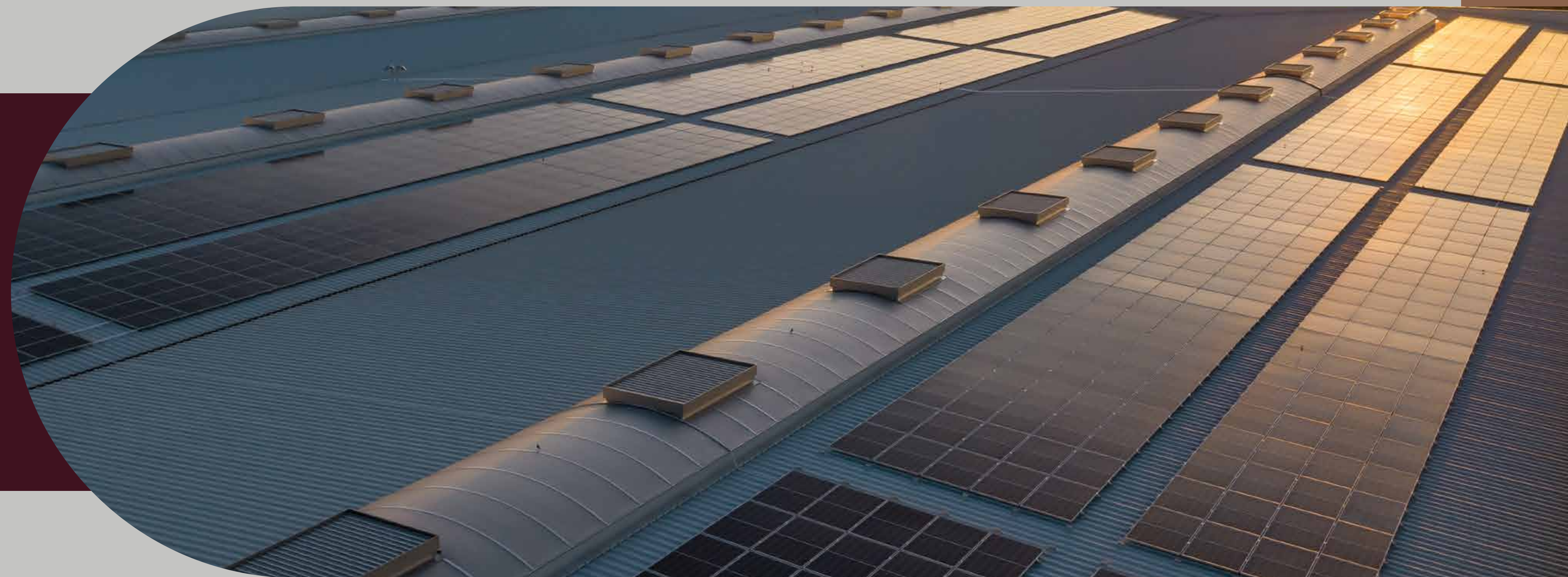
Clinics are equipped with advanced medical devices to guarantee full health care solutions for all visitors

THE ROAD TO SUCCESS IS DOTTED WITH MANY TEMPTING PARKING SPACES

Employees and Customers will not waste their times looking for parking slots!

Along the strip mall a dedicated underground parking set to accommodate **530 vehicles**.





SOLAR ENERGY— TODAY'S RESOURCES FOR A BRIGHTER TOMORROW

At Avenue we care about the nature as we care about our customers.

Eco- friendly Solar panels are scattered all over **50 Percent of the five building** to ensure that the building energy consumption will not be harmful on the environment.

OTHER PROJECTS
FACILITIES AND
COMPONENTS

1

UNDERGROUND
STORAGE AREA



2

FOUR PIAZZAS



3

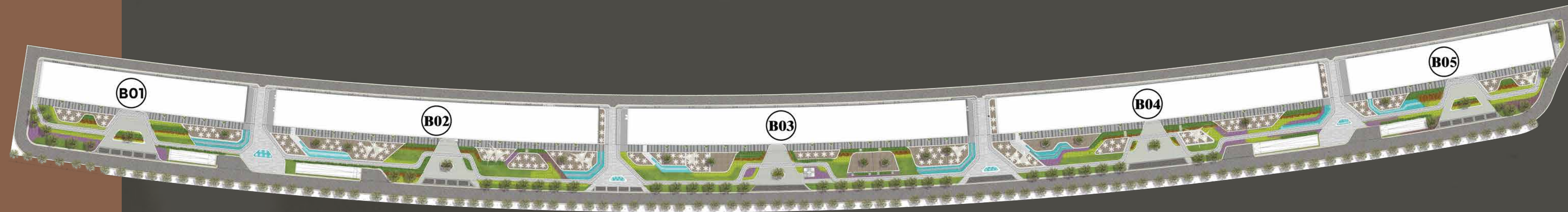
SUPERMARKETS & BAKERIES



LAYOUT/
FLOOR
PLANS



MASTER PLAN



BUILDING (2)



BUILDING (2) GROUND FLOOR



BUILDING (2) FIRST FLOOR



BUILDING (2) SECOND FLOOR



BUILDING (3)



BUILDING (3) GROUND FLOOR



BUILDING (3) FIRST FLOOR



BUILDING (3) SECOND FLOOR



BUILDING (4)



BUILDING (4) GROUND FLOOR



BUILDING (4) FIRST FLOOR



BUILDING (4) SECOND FLOOR



ABOUT THE DEVELOPER





SOROUH DEVELOPMENTS' BACKGROUND

Sorouh Developments was founded in 2018.

Our vision is to create integrated communities where our residents enjoy an unsurpassed quality within vibrant yet tranquil lives, aspiring to craft iconic developments where our residents lead a new lifestyle and enjoy a superior quality of life within an ambitious environment; putting us in a positioning of its own – to become the leading developer of fully integrated communities by consistently offering premium quality standards of living and attractive investment opportunities.

Inspired by our revolutionary vision to become the leading luxury real estate developer of fully integrated, unique communities in Egypt with un-comprising commitment to service excellence. We are focused on building people's dreams through communities that cater to the interests of our residents, leaving an enduring legacy for future generation.

Ive
Mr



16101

Ave Entrada
Avenue
Commercial Strip

